

Replace existing 12 kV overhead line with new

Guy and anchor locations

Sweeco Rd

Sweeco Rd

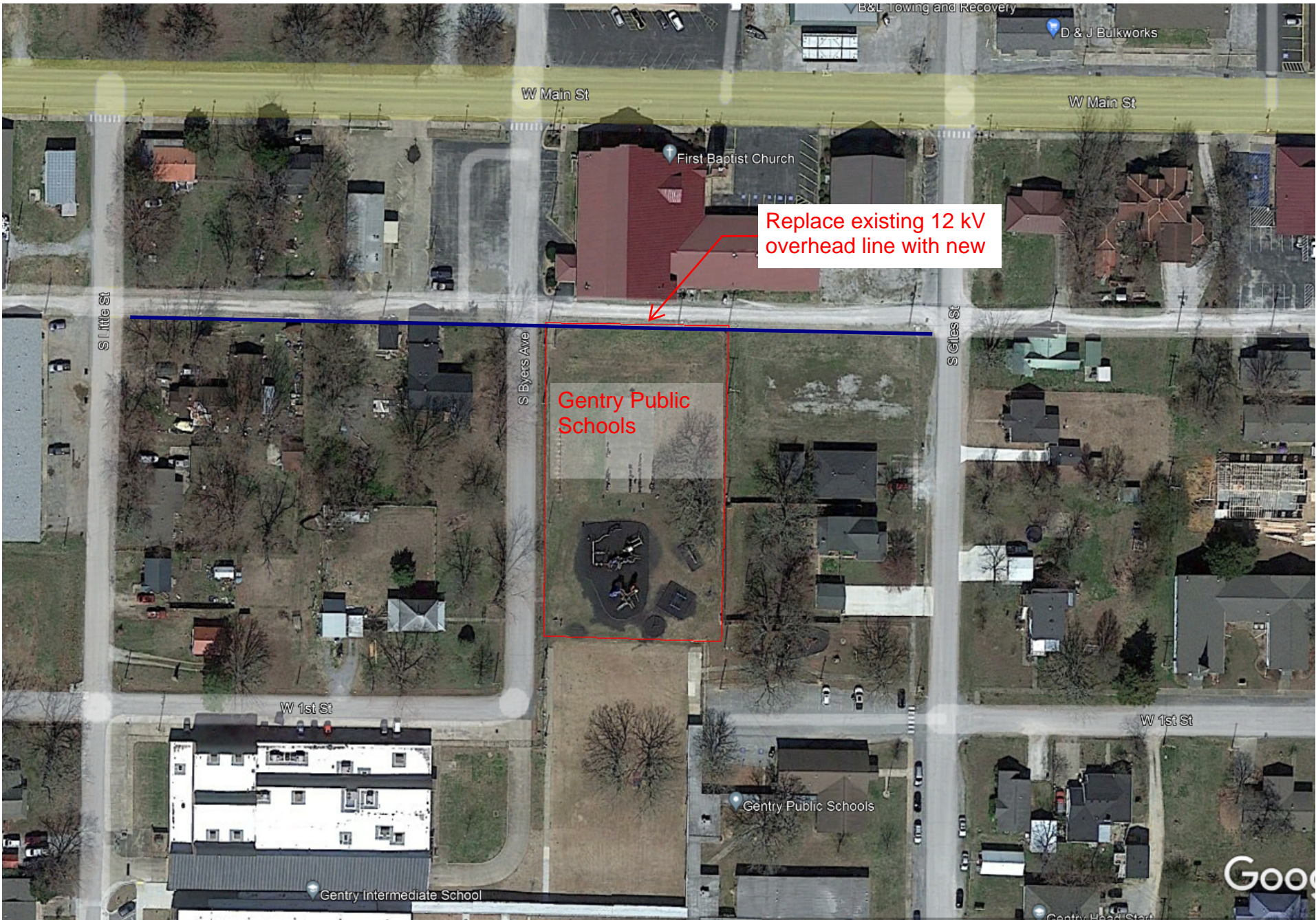
Pioneer Ln

W 7th St

Avalon Dr

Pioneer Ln





Replace existing 12 kV overhead line with new

Gentry Public Schools

W Main St

W Main St

S Little St

S Byers Ave

S Giles St

First Baptist Church

W 1st St

W 1st St

Gentry Intermediate School

Gentry Public Schools

Google