



- DRAFTSTOPPING NOTES:**
- SEE FLOOR PLAN FOR REQUIRED DRAFTSTOPPING LOCATIONS
 - DRAFTSTOPPING SHALL EXTEND CONTINUOUSLY FOR THE FULL LENGTH OF RAFTERS AND TRUSSES WHERE INDICATED
 - DRAFTSTOPPING SHALL EXTEND CONTINUOUSLY FULL HEIGHT FROM ROOF SHEATHING TO FINISH CEILING MATERIAL
 - DRAFTSTOPPING MATERIAL SHALL BE MINIMUM 1/2 INCH GYPSUM BOARD, 3/8 INCH 2x4 WOOD OR 1/2 INCH OSB
 - ALL DRAFTSTOPPING EDGES SHALL BE TIGHTLY FIT, INCLUDING THE PENETRATIONS, SO AS TO PREVENT THE PASSAGE OF AIR

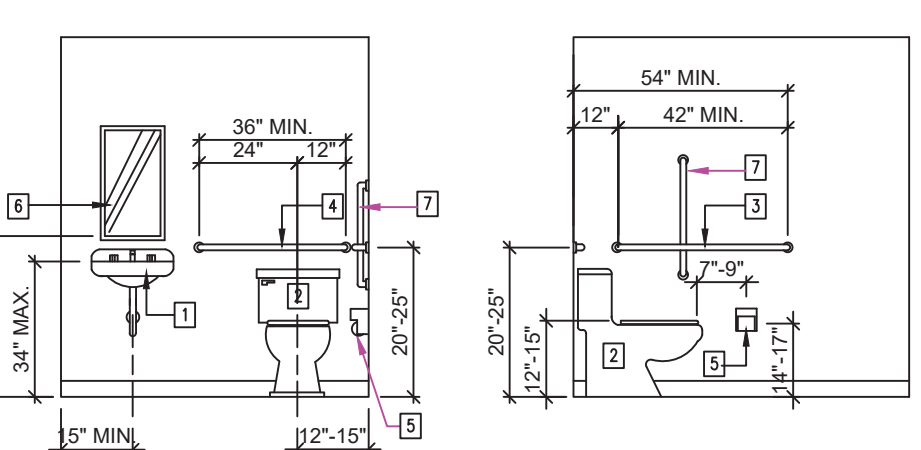
SYMBOL LEGEND

- JACK IN WALL FOR FIRE ALARM PULL
- JACK IN WALL FOR FIRE ALARM STROBE LIGHT
- JACK IN WALL FOR FIRE ALARM HORN / STROBE LIGHT
- JACK IN WALL (NON POWERED)
- 120 V AMP CEILING MOUNT PROGRAMMABLE DIMMER
- RECESSED FLUORESCENT LIGHT FIXTURE (CL-CL-CL)
- RESTROOM MEDIAN CEILING MOUNT EXHAUST FAN (CL-CL-CL)
- 30\"/>

FIXTURE REQUIREMENTS

FIXTURE	AGE 3 TO 4 YRS	AGE 5 TO 8 YRS	AGE 9 TO 12 YRS
WATER CLOSET CENTERLINE FROM FINISHED FLOOR	12 INCHES	12 - 15 INCHES	15 - 18 INCHES
WATER CLOSET SEAT HEIGHT	11 - 12 INCHES	12 - 15 INCHES	15 - 17 INCHES
GRAB BAR MOUNTING HEIGHT	18 - 20 INCHES	20 - 25 INCHES	25 - 27 INCHES
TOILET PAPER DISPENSER HEIGHT	14 INCHES	14 - 17 INCHES	17 - 19 INCHES

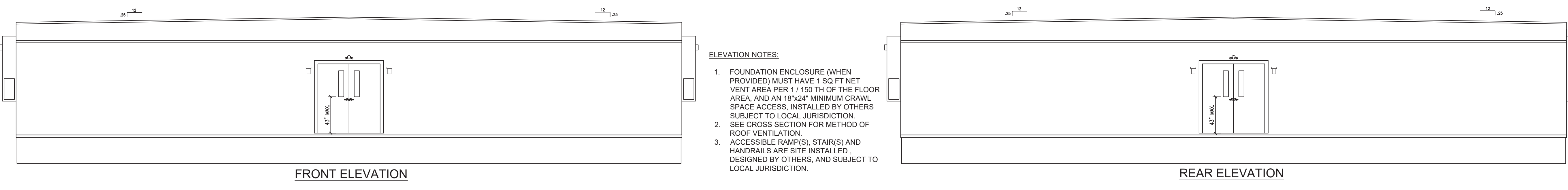
NOTE: KIDDE BATH IS DESIGNED FOR USE BY CHILDREN AGES 3 TO 8 YEARS OLD.
 WATER CLOSET CENTERLINE FROM FINISHED FLOOR: 12 INCHES
 WATER CLOSET SEAT HEIGHT: 12 INCHES ABOVE FINISHED FLOOR
 GRAB BAR MOUNTING HEIGHT: 20 INCHES ABOVE FINISHED FLOOR
 TOILET PAPER DISP. HEIGHT: 14 INCHES ABOVE FINISHED FLOOR



INTERIOR ELEVATIONS
SCALE: 1/4" = 1'-0"

LEGEND:

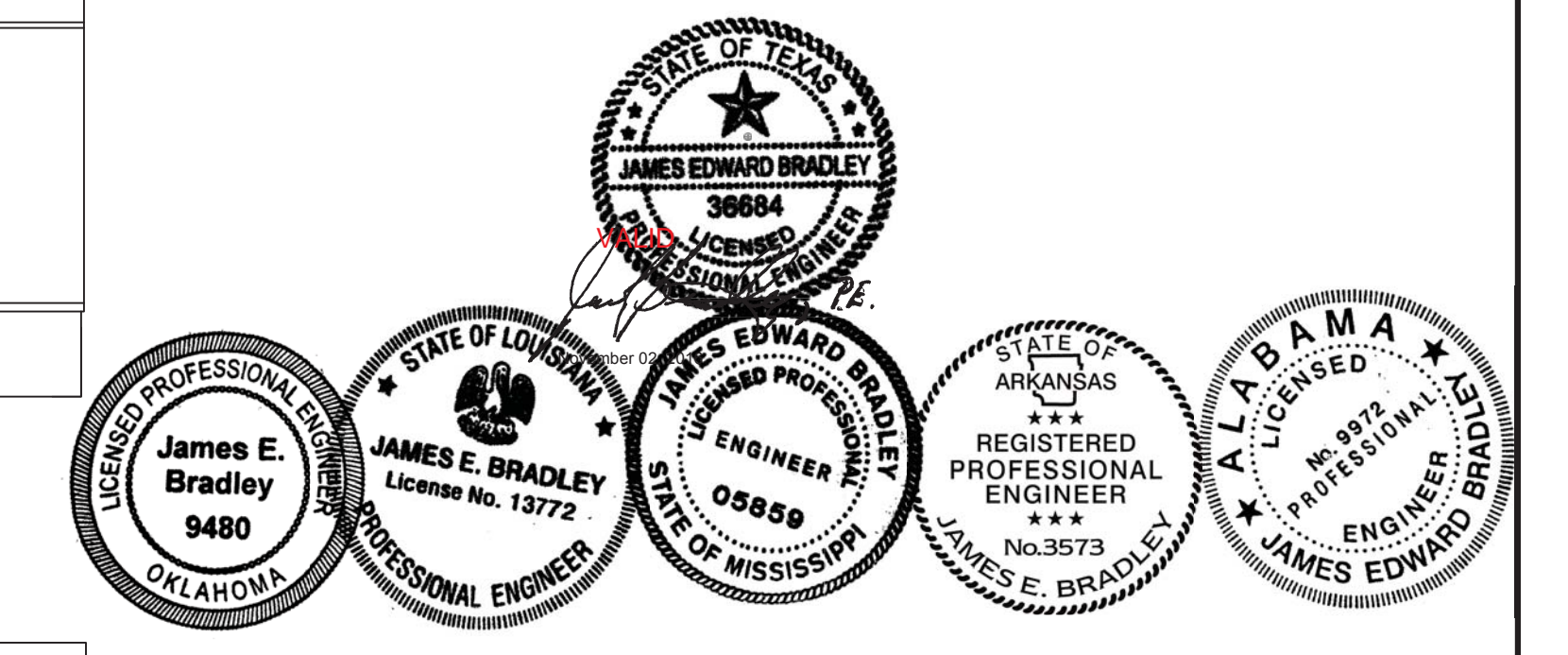
- WATER CLOSET
- 1/2" WATER CLOSET
- 4\"/>



RADCO APPROVED
 Nov 03, 2016
 RESOURCES: APPLICATION, DESIGN & CONTROL, INC.
 EASTON NATIONAL BLDG.
 5800 BENJAMIN CENTER DRIVE, SUITE 302
 TAMPA, FL 33634
 (813) 242-0020 • (813) 242-0254 • F
RADCO
 THREE PARTY DESIGN APPROVAL & INSPECTION AGENCY

APPROVED
 Nov 03, 2016
 James E. Bradley
 Texas Industrialized Building Code Council
 IBC - IRC

Reg. P.E. Firm Name:
 James E. Bradley
 Firm Reg. # F-1255



COLUMN STUDS AND STRAPPING

INDICATES COLUMN DESCRIPTION LOCATIONS (EACH HALF)

INDICATES THE REQUIREMENT FOR A BEARING STIFFENER

INDICATES TYPE OF THE DOWN STRAP. (SEE DESIGN PACKAGE FOR ADDITIONAL SPECIFICATIONS) LOCATIONS (QTY IS 1 UNLESS NOTED OTHERWISE)

COLUMN DESCRIPTIONS

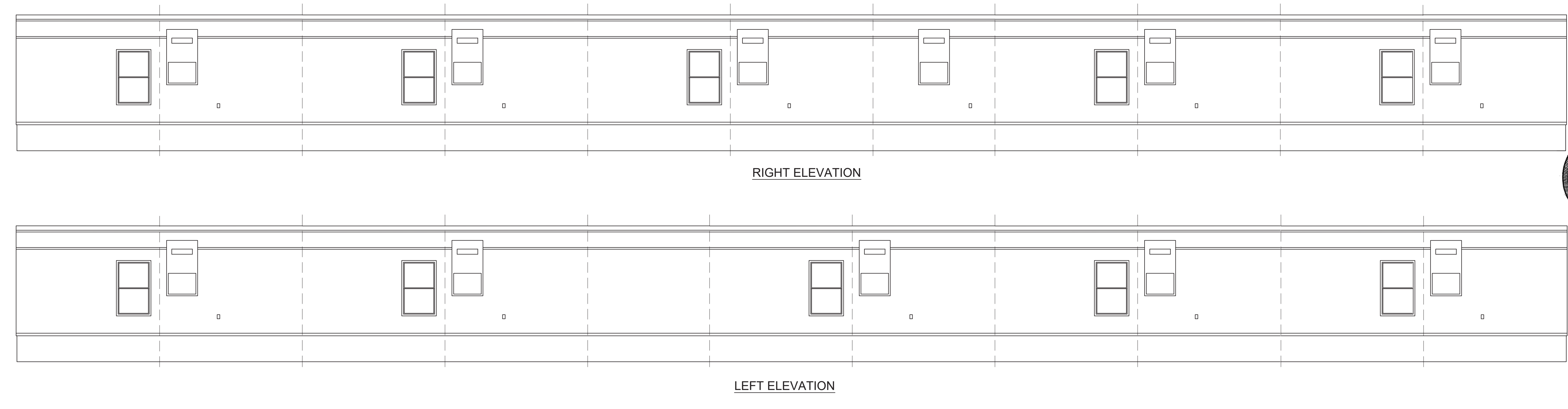
A = 2\"/>

DOOR SCHEDULE

(A)	7280 STEEL DOOR W/6\"/>
(B)	3680 - 5\"/>
(C)	3680 - SOLID CORE - FLAT PANEL DOOR 20 MIN. RATED ASSEMBLY W/SELF CLOSING STEEL JAMBS - PUSH/PULL HARDWARE
(D)	3680 - SOLID CORE - FLAT PANEL DOOR 20 MIN. RATED ASSEMBLY W/SELF CLOSING STEEL JAMBS - LEVER KEYED HARDWARE

WINDOW SCHEDULE

(Z)	3660 - VERTICAL SLIDER DP 59 INSULATED LOW-E TINTED GLASS BRONZE FRAME-VINYL MINI-BLENDS
-----	------------------------------------------------------------------------------------------



ELEVATIONS
 3/16" = 1'-0"

CONSULTING ENGINEER JAMES BRADLEY, P.E. - 212 FOX TRAIL - PARKESBURG, PA. 19365 - (610) 857-2458

DESTINATION: LIVINGSTON, LA
TITAN MODULAR SYSTEMS, INC.
 162 INDUSTRIAL DRIVE - ALMA, GA 31510
 912-632-3344 (PH) • 912-632-3245 (FX)
 DATE: 10-27-16 ENGINEER:
 SCALE: 1/4" = 1'-0"
 CODES: AR / AL / LA / MS / OK / TX
 TMS-2832 A-K - 152'x64' - EDUCATIONAL
 TMS-2833 A-K - 152'x64' - EDUCATIONAL
 TMS-2834 A-K - 152'x64' - EDUCATIONAL
 TMS-2835 A-K - 152'x64' - EDUCATIONAL
 FLOOR PLAN/ELEV PAGE: 2 / 4